

CONNECTING COMMUNITIES



Connecting Communities

When you need to make a journey and there's no public transport available to you locally, we'll collect you and connect you to an appropriate bus route or train link for onward travel so you can reach your destination quickly and easily.

For journeys where connecting to other services is inappropriate, end to end journeys may be possible.



Contacting Suffolk County Council

Passenger Transport
Endeavour House
8 Russell Road
Ipswich
Suffolk, IP1 2BX

General Enquiries

Customer Services

0345 606 6171
connecting.communities@suffolk.gov.uk

Visit our website

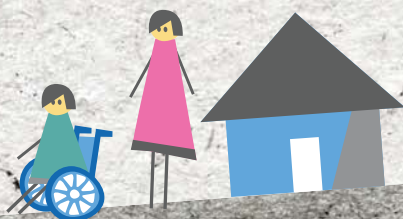
www.suffolkonboard.com/cc

Follow us on Twitter

@suffolkonboard

How do I use it?

1. **Call** your local area operator up to a week before you'd like to travel – they'll be able to answer any questions you might have.
2. **Book** your journey
3. **Travel** to your destination





Booking your journey

Area/ Phone number	Booking hours	Service hours
Babergh 01473 826242	Mon - Fri 9.00am - 3.00pm	Mon - Sat 7.00am - 7.00pm
Forest Heath 01638 664304	Mon-Fri 8.00am - 4.00pm	Mon - Sat 7.00am - 7.00pm
Ipswich 01449 614271	Mon-Fri 9.00am - 4.00pm	Mon - Sat 7.00am - 7.00pm
Mid Suffolk 01449 614271	Mon-Fri 9.00am - 4.00pm	Mon - Sat 7.00am - 7.00pm
St Edmundsbury 01440 712028	Mon-Fri 8.00am - 4.00pm	Mon - Sat 7.00am - 7.00pm
Suffolk Coastal 01728 635938	Mon-Fri 8.45am - 4.00pm	Mon - Sat 7.00am - 7.00pm
Waveney 01986 896896	Mon-Fri 9.00am - 4.00pm	Mon - Sat 7.00am - 7.00pm

